

EN 14492-1  
COMPLIANT



- High-strength, long-lasting steel body
- Extra reinforced planetary gear system by heat treatment made of special steel
- Lightweight and strong design
- Hydraulic disc brake system holding 100% load
- Front pulley and spring rope tensioner offered as standard
- Manual clutch as standard
- High torque hydromotor
- Corrosion and rust resistant electrostatic powder paint
- CE Machinery Directive 2006/42/EC
- Relevant standards EN 14492-1 : 2006 Standard for power-driven cranes

Max. Pulling Force kg/lbs	7.200 kg (15873 lbs)
Max. Rope Diameter (mm/in)	14 mm (3/9")
Max. Rope Length (m-ft)	37.7 m (123 ft)
Hydromotor(cc/in³)	315 cc (19 in³)
Max. Pump Flow (lt/min-g/min)	60 L (15.8 gal)
Gear Ratio	6 : 1
Max. working pressure (bar/psi)	185 bar (2683 psi)
Recommended Gear Oil	80 w 90 - 0.75 L
Product Weight	83 kg (182 lbs)

Rope Winding Number	Pulling Capacity (kg/lbs)	Rope Winding Speed (mt-min/ft-min)	Rope Length (m/ft)
1	7200/15873	10.6/34	6/19
2	5840/12874	12/39	12.8/41
3	4900/10802	13.4/43	20.3/66
4	4230/9325	14,8/48	28.6/93
5	3717/8194	16.3/53	37.7/123

Pulling Capacity **kg/lb** Rope Speed **m/min-ft/min** Rope Length **m/ft**

- Warning!!!
- The A-B lines must be open to the T-Tank line before the winch can be started.
- Hydromotor Drain line must be open
- The last 5 turns of rope should always be left on the winch.
- This winch is designed and manufactured for towing purposes, do not use for lifting people or materials!
- Kms Winch reserves the right to make changes in technical details.

### Standard

- Roller Fairlead
- Cable Tensioner
- Manual Clutch

### Hydraulic Inlets

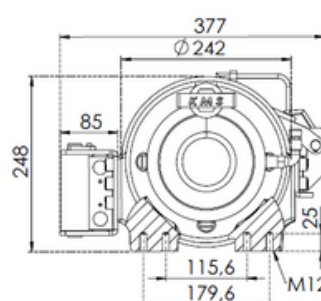
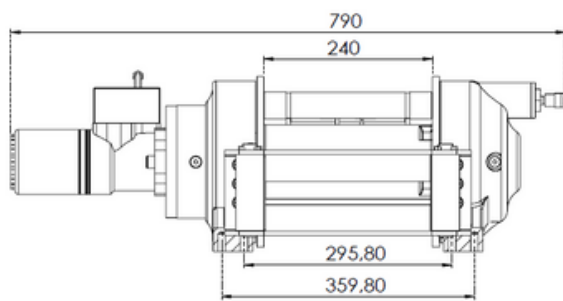
- G 1/2"

### Optional

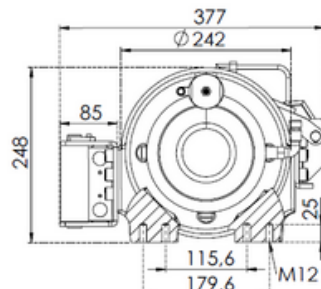
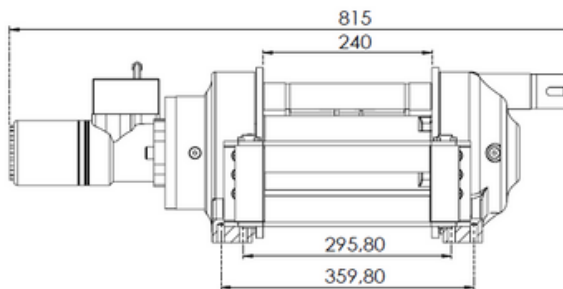
- Air Clutch
- IP67 - IP 68
- Rope alligner guide system

### Mounting Bolts

- 16 pieces M12 8.8K



[Standard] Manual Clutch



[Optional] Air Clutch

